

ENFORCE X SWE HIGH

Art. No.13727

Leg height 19,5 cm, antistatic, sole 026



13727



Upper Material

Soft leather, hydrophobic, breathable.

Inner Lining

Breathable inner liner.

Sole

Extremely slip resistant rubber outsole with PU wedge which is fuel-oil and skid resistant, with a non-marking, self-cleaning, antistatic tread. Excellent insulation against heat and cold

Insole

Anatomically formed, quick change, machine washable insert with excellent moisture absorption and quick drying qualities

Footbed

TEXON (fleece) insole absorbs moisture

HAIX® 2-Zone Lacing

Two Zone Lacing System enables a separate adjustment of the boot to the foot and leg area.

HAIX® Secura Liner®

Footwear inner liner which will never pull out or wrinkle up over time; lining is firmly secured and sealed along with the upper leather beneath the sole

HAIX® Sun Reflect Leather

Reduces the heating effect of the upper leather by direct sunlight. Sunlight is reflected by the leather, keeping the leather and the feet cooler

HAIX® Climate System

Permits air circulation with every step – moist air is released and fresh air comes in through the vent holes at the top of the boot

Other

Anatomically formed and softly padded tongue, lightweight, high quality low friction loops and reinforcement in the toe and heel area. Superior sole stability enhanced by a plastic stone shield built into the sole which also prevents the sole of the foot from feeling every rock and stone

Extended Wear Program

Out of warranty footwear can be refurbished with original factory parts through a resale package. This package includes any necessary replacement or repair of stitching, profiled rubber toe caps, soles, and insoles. Footwear will be cleaned and deodorized

BLACK EAGLE® TACTICAL 2.0 GTX

high / black
Art. No. 340003

CE EN ISO 20347:2012 O2 HRO HI CI WR FO SRC

Leather, waterproof and extremely breathable with GORE-TEX® Extended, leg height 18.5 cm, antistatic, sole 018



340003



Upper Material

Waterproof Leather 1.6 – 1.8 mm thick, hydrophobic, breathable

Inner Lining

GORE-TEX® Extended; waterproof and highly breathable. Abrasion-resistant lining with optimized climate comfort, especially for flexible alternating inside and outside use.

Insert

Comfortable, cushioning, moisture repellent. Separate heel shape for good cushioning and foot insertion. "AIRFLOW" channels.

Running sole

Made of rubber, resistant to fuel-oil, heat and cold compliant with EN ISO 20347:2012, non-marking.

HAIX® Anti Slip

Very good grip on different terrains by profile configuration and use of a special rubber.

Durable Sole

Rubber mixture for long durability.

Inner sole

2-component PU, light, cushioning, supporting.

Pronation Support

Supports the center of the heel, prevents buckling inward.

Stabilizer

Asymmetrical PU for stabilizing the heel.

HAIX® 2-Zone Lacing

Two Zone Lacing System enables a separate adjustment of the boot to the foot and leg area.

HAIX® Climate System

The HAIX® Climate system uses the pumping movement, which permits air circulation with every step – moist air is released and fresh air comes in through the vent holes at the top of the boot.

HAIX® Ankle Protector System

Safety Protection zones to prevent injury to the ankle.

Sun Reflect

Reduces the heating effect of the upper leather by direct sunlight. Sunlight is reflected by the leather, keeping the leather and the feet cooler.

Others

Low weight, antistatic, metal-free, lace pocket, pull-on loop

HAIX®-Schuhe, Produktions- und Vertriebs GmbH

Auhofstrasse 10, 84048 Mainburg, Germany

T. +49(0)8751/8625-0, F. +49(0)8751/8625-25

info@haix.de, www.haix.com

BLACK EAGLE® TACTICAL 2.0 WINTER GTX

high / black
Art. No. 340036

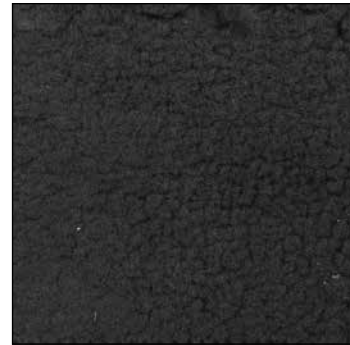


CE EN ISO 20347:2012 O2 HRO HI CI WR FO SRC

Leather, waterproof and extremely breathable with GORE-TEX® Extended, leg height 18.5 cm, antistatic, sole 018



340036



warming inner lining



sole with special rubber mixture for winter

Upper Material

Waterproof Leather 1.6 – 1.8 mm thick, hydrophobic, breathable

Inner Lining

GORE-TEX® Extended; waterproof and highly breathable. Abrasion-resistant lining with optimized climate comfort, especially for flexible alternating inside and outside use.

Insert

Comfortable, cushioning, moisture repellent. Separate heel shape for good cushioning and foot insertion. "AIRFLOW" channels.

Running sole

Made of rubber, resistant to fuel-oil, heat and cold compliant with EN ISO 20347:2012, non-marking.

HAIX® Anti Slip

Very good grip on different terrains by profile configuration and use of a special rubber.

Durable sole

Rubber mixture for long durability.

Inner sole

2-component PU, light, cushioning, supporting.

Pronation Support

Supports the center of the heel, prevents buckling inward.

Stabilizer

Asymmetrical PU for stabilizing the heel.

HAIX® Climate System

The HAIX® Climate system uses the pumping movement, which permits air circulation with every step – moist air is released and fresh air comes in through the vent holes at the top of the boot.

HAIX® Ankle Protector System

Safety Protection zones to prevent injury to the ankle.

ESPECIALLY MADE FOR WINTER

Faux fur winter lining, highly insulating Aerogel intermediate layer in toe and sole area, sole: soft winter quality, very slip resistant in cold and snow