

**EXPLORER**  
CASES



[www.explorercases.com](http://www.explorercases.com)



100% ABSOLUTE  
GUARANTEE  
FOREVER  
PROTECTION

**Pistol & Gun**  
WATERPROOF CASES



# MILITARY & LAW



## MOD. 7814

- Two side handles and front rubber grip handle
- Optional shoulder strap available



Automatic purge valve



New pull release latches and stainless steel padlockable points



Two side handles

## AVAILABLE COLORS



BLACK

MIL. GREEN

SAND

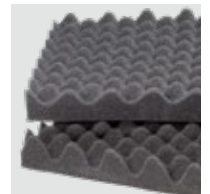
## INTERNAL CONFIGURATIONS



pre-cubed foam



convoluted foam



high density full foam



tactical gun bag



Gun bag  
Art. GBAG 76 (included)

CODES AND COLORS			INTERNAL CONFIGURATION	WEIGHT		VOLUME		BUOYANCY (max)		TEMP. RATING	
BLACK	MIL. GREEN	SAND		Kg	Lbs	Lt	Gal	Kg	Lbs	°C	°F
7814.BE	7814.GE	7814.DE	EMPTY	5.50	12.12	39.6	10.46	25.3	55.77	min. -33 max +90	min. -27.4 max +194
7814.B	7814.G	7814.D	W/PRE CUBED FOAM	6.40	14.11						
7814.BCV	7814.GCV	7814.DCV	W/CONVOLUTED FOAM	6.10	13.44						
7814.BFF	7814.GFF	7814.DFF	W/FULL FOAM	6.70	14.77						
7814.BGB	7814.GGB	7814.DGB	W/TACTICAL GUN BAG	6.85	15.10						
CERTIFICATIONS				INTERNAL DIM. (mm - in)			EXTERNAL DIM. (mm - in)				
IP67 STANAG 4280 (ed. 2) DEF STAN 81-41 (lev. J)				L	W	D	Lid	Base	L	W	D
				780	350	145	42	103	846	427	167
				30.70	13.77	5.70	1.65	4.05	33.30	16.81	6.57

NSN available for most models on demand





# Pistol & Gun WATERPROOF CASES

## ENFORCEMENT



Automatic purge valve



New pull release latches and stainless steel padlockable points



### MOD. 9413

- Two men lift side handles and large front handle
- Wheels with bearings
- Optional shoulder strap available (Art. SHOULDERKIT.U)

### AVAILABLE COLORS



BLACK

MIL. GREEN

SAND

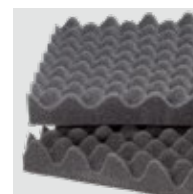
### INTERNAL CONFIGURATIONS



pre-cubed foam



convoluted foam



high density full foam



tactical gun bag



Gun bag  
Art. GBAG 94 (included)

CODES AND COLORS			INTERNAL CONFIGURATION	WEIGHT		VOLUME		BUOYANCY (max)		TEMP. RATING	
BLACK	MIL. GREEN	SAND		Kg	Lbs	Lt	Gal	Kg	Lbs	°C	°F
9413.BE	9413.GE	9413.DE	EMPTY	6.40	14.11	45.30	11.96	27.9	61.50	min. -33 max +90	min. -27.4 max +194
9413.B	9413.G	9413.D	W/PRE CUBED FOAM	7.30	16.09						
9413.BCV	9413.GCV	9413.DCV	W/CONVOLUTED FOAM	7.10	15.65						
9413.BFF	9413.GFF	9413.DFF	W/FULL FOAM	7.80	17.19						
9413.BGB	9413.GGB	9413.DGB	W/TACTICAL GUN BAG	8.40	18.51						
CERTIFICATIONS			INTERNAL DIM. (mm - in)			EXTERNAL DIM. (mm - in)					
IP67			L	W	D	Lid	Base	L	W	D	
STANAG 4280 (ed. 2)			939	352	137	43	94	989	415	157	
DEF STAN 81-41 (lev. J)			36.96	13.85	5.39	1.69	3.70	38.93	16.33	6.18	



# MULTIGUN CASES



## MOD. 9433

- Two men lift side handles and large front handle
- Large wheels with bearings



Automatic purge valve



Large wheels with bearings

## AVAILABLE COLORS



BLACK MIL. GREEN ORANGE SAND



## INTERNAL CONFIGURATIONS



pre-cubed foam



Shipping label holder



New pull release latches and stainless steel padlockable points

CODES AND COLORS				INTERNAL CONFIGURATION	WEIGHT		VOLUME		BUOYANCY (max)		TEMP. RATING	
BLACK	MIL. GREEN	SAND	ORANGE		Kg	Lbs	Lt	Gal	Kg	Lbs	°C	°F
9433.BE	9433.GE	9433.DE	9433.OE	EMPTY	10.2	22.48	108	28.53	84.9	187.17	min. -33	min. -27.4
9433.B	9433.G	9433.D	9433.O	W/PRE CUBED FOAM	12.7	27.99					max +90	max +194
CERTIFICATIONS					INTERNAL DIM. (mm - in)					EXTERNAL DIM. (mm - in)		
IP67 STANAG 4280 (ed. 2) DEF STAN 81-41 (lev. J)					L	W	D	Lid	Base	L	W	D
					936	350	330	42	288	1009	412	354
					36.85	13.77	12.99	1.65	11.33	39.72	16.22	13.93



## Pistol & Gun WATERPROOF CASES

# LONG CASES



### MOD. 11413

- Two men lift side handles and large front handle
- Wheels with bearings
- Optional shoulder strap available (Art. SHOULDERKIT.U)



New pull release latches and stainless steel padlockable points



Automatic purge valve

### AVAILABLE COLORS



BLACK

MIL. GREEN

SAND

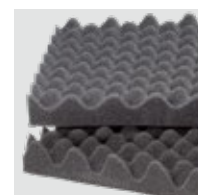
### INTERNAL CONFIGURATIONS



pre-cubed foam



convoluted foam



high density full foam



tactical gun bag



Gun bag  
Art. GBAG 114 (included)

CODES AND COLORS			INTERNAL CONFIGURATION	WEIGHT		VOLUME		BUOYANCY (max)		TEMP. RATING	
BLACK	MIL. GREEN	SAND		Kg	Lbs	Lt	Gal	Kg	Lbs	°C	°F
11413.BE	11413.GE	11413.DE	EMPTY	8.20	18.07	53.7	14.18	33.3	73.41	min. -33 max +90	min. -27.4 max +194
11413.B	11413.G	11413.D	W/PRE CUBED FOAM	9.30	20.50						
11413.BCV	11413.GCV	11413.DCV	W/CONVOLUTED FOAM	9.10	20.06						
11413.BFF	11413.GFF	11413.DFF	W/FULL FOAM	9.80	21.60						
11413.BGB	11413.GGB	11413.DGB	W/TACTICAL GUN BAG	10.30	22.70						
CERTIFICATIONS			INTERNAL DIM. (mm - in)					EXTERNAL DIM. (mm - in)			
IP67			L	W	D	Lid	Base	L	W	D	
STANAG 4280 (ed. 2)			1136	350	135	42	93	1189	415	159	
DEF STAN 81-41 (lev. J)			44.72	13.77	5.31	1.65	3.66	46.81	16.33	6.25	



# LONG CASES



New pull release latches and stainless steel padlockable points



## MOD. 13513

- Two men lift side handles and large front handle
- Wheels with bearings
- Optional shoulder strap available (Art. SHOULDERKIT.U)



Automatic purge valve

## AVAILABLE COLORS

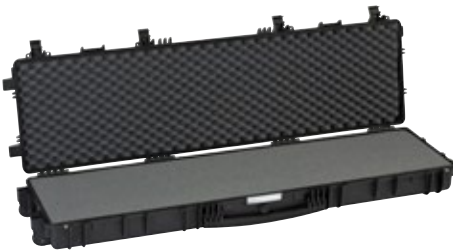


BLACK

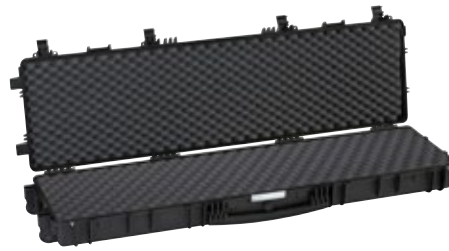
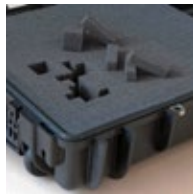
MIL. GREEN

SAND

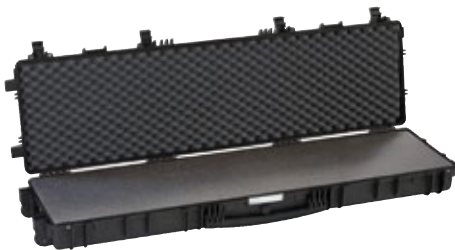
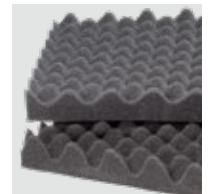
## INTERNAL CONFIGURATIONS



pre-cubed foam



convoluted foam



high density full foam



tactical gun bag



Gun bag  
Art. GBAG 135 (included)

CODES AND COLORS			INTERNAL CONFIGURATION	WEIGHT		VOLUME		BUOYANCY (max)		TEMP. RATING	
BLACK	MIL. GREEN	SAND		Kg	Lbs	Lt	Gal	Kg	Lbs	°C	°F
13513.BE	13513.GE	13513.DE	EMPTY	9.50	20.94	63.7	16.82	39.5	87.08	min. -33 max +90	min. -27.4 max +194
13513.B	13513.G	13513.D	W/PRE CUBED FOAM	10.80	23.81						
13513.BCV	13513.GCV	13513.DCV	W/CONVOLUTED FOAM	10.50	23.14						
13513.BFF	13513.GFF	13513.DFF	W/FULL FOAM	11.50	25.35						
13513.BGB	13513.GGB	13513.DGB	W/TACTICAL GUN BAG	11.80	26.01						
CERTIFICATIONS				INTERNAL DIM. (mm - in)			EXTERNAL DIM. (mm - in)				
IP67 STANAG 4280 (ed. 2) DEF STAN 81-41 (lev. J)				L	W	D	Lid	Base	L	W	D
				1350	350	135	42	93	1430	415	159
				53.14	13.77	5.31	1.65	3.66	56.29	16.33	6.25

NSN available for most models on demand





## Pistol & Gun WATERPROOF CASES

# DEEP GUN CASES



### MOD. 13527

- Two men lift side handles and large front handle
- 3+3 wheels with bearings

### AVAILABLE COLORS

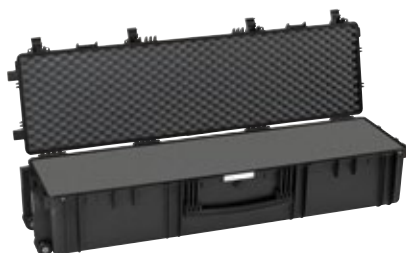


BLACK

MIL. GREEN

SAND

### INTERNAL CONFIGURATIONS



pre-cubed foam



high density full foam



Automatic purge valve



New pull release latches and stainless steel padlockable points



Two men lift side handles



3+3 wheels with bearings

CODES AND COLORS			INTERNAL CONFIGURATION	WEIGHT		VOLUME		BUOYANCY (max)		TEMP. RATING	
BLACK	MIL. GREEN	SAND		Kg	Lbs	Lt	Gal	Kg	Lbs	°C	°F
13527.BE	13527.GE	13527.DE	EMPTY	12.90	28.44	128.5	33.94	97.5	214.95	min. -33 max +90	min. -27.4 max +194
13527.B	13527.G	13527.D	W/PRE CUBED FOAM	15.00	33.06						
13527.BFF	13527.GFF	13527.DFF	W/FULL FOAM	17.20	37.92						
CERTIFICATIONS				INTERNAL DIM. (mm - in)				EXTERNAL DIM. (mm - in)			
IP67 STANAG 4280 (ed. 2) DEF STAN 81-41 (lev. J)				L	W	D	Lid	Base	L	W	D
				1350	350	272	42	230	1430	415	296
				53.14	13.77	10.70	1.65	9.05	56.29	16.33	11.65



# THE LONGEST RIFLE CASE



## MOD. 15416

- Side handles and large front handle
- Self-oiling free running wheels
- Double automatic purge valves

## AVAILABLE COLORS



BLACK

MIL. GREEN

SAND

## INTERNAL CONFIGURATIONS



pre-cubed foam



high density full foam



New wide pull release latches grant additional safety drop test proof



Double automatic purge valves



Two men lift side handles



Self-oiling free running wheels

CODES AND COLORS			INTERNAL CONFIGURATION	WEIGHT		VOLUME		BUOYANCY (max)		TEMP. RATING	
BLACK	MIL. GREEN	SAND		Kg	Lbs	Lt	Gal	Kg	Lbs	°C	°F
15416.BE	15416.GE	15416.DE	EMPTY	11.50	25.35	92.9	24.54	61.6	135.80	min. -33 max +90	min. -27.4 max +194
15416.B	15416.G	15416.D	W/PRE CUBED FOAM	13.60	29.98						
15416.BFF	15416.GFF	15416.DFF	W/FULL FOAM	14.30	31.52						
CERTIFICATIONS				INTERNAL DIM. (mm - in)				EXTERNAL DIM. (mm - in)			
IP67 STANAG 4280 (ed. 2) DEF STAN 81-41 (lev. J)				L	W	D	Lid	Base	L	W	D
				1540	377	160	42	118	1629	456	183
				60.62	14.84	6.29	1.65	4.64	64.13	17.95	7.20

NSN available for most models on demand







# MULTI-WEAPONS



## Pistol & Gun WATERPROOF CASES



Padlockable points  
and heavy duty  
metal latches



**MOD. 10826**

- Models **10826.B D2** and **10826.B D4** are set with internal pre-shaped foam bedding and metal lock bars for 6 weapons and 12 magazines.
- Model **10826.B D5** is set with a plastic molded rifle bedding and adjustable barrel rests, that allows for 6 guns of various lengths to be stored with mounted optics. Metal lock bar is padlock-able and completely removable. Magazines and accessories can be stored in the large Velcro-ed net pouch.

**All versions are able to accommodate most popular guns such as G36, MP5, M4, M16, AR 70/90.**

**CUSTOM WEAPONS RACKING SYSTEM AVAILABLE ON REQUEST**

## CONFIGURATIONS AVAILABLE COLOR: BLACK



pre-cubed foam  
hinged lid  
**Mod. 10826.B**



pre-cut foam for 6  
rifles - hinged lid  
**Mod. 10826.B D2**



pre-cut foam for 6  
rifles - detach. lid  
**Mod. 10826.B D4**



adj barrel length for 6  
rifles - detach. lid  
**Mod. 10826.B D5**



Art. EX.METALPLATE  
Optional padlock-able  
accessory to secure the  
open or closed case in  
vertical position to the  
wall. **Fits all mod.  
10826 & 10840.**



Automatic purge  
valve



Lockable metal bar  
to secure the guns.  
(on mod. 10826.B D2  
& 10826.B D4)



The metal bar can  
be detached and  
securely hooked to  
the in-built  
padlockable point  
of the case  
(on model 10826.B D5)



Two adjustable barrel  
systems can be slid  
up and down  
independently to  
accommodate  
various barrel  
length. The  
large net pouch  
can secure  
magazines and  
accessories  
(on model 10826.B D5)

CODES AND COLORS		INTERNAL CONFIGURATION	WEIGHT		VOLUME		BUOYANCY (max)		TEMP. RATING	
BLACK	LID		Kg	Lbs	Lt	Gal	Kg	Lbs	°C	°F
10826.BE	HINGED LID	EMPTY	18.40	40.56	174	45.96	120.6	265.87	min. -33 max +90	min. -27.4 max +194
10826.B	HINGED LID	PRE CUBED FOAM	21.60	47.62						
10826.B D2	HINGED LID	FOAM x 6 RIFLES	20.01	44.11						
10826.B D4	DETACH. LID	FOAM x 6 RIFLES	19.70	43.43						
10826.B D5	DETACH. LID	ADJ BARREL RESTS x 6 RIFLES	21.80	48.06						
CERTIFICATIONS			INTERNAL DIM. (mm - in)			EXTERNAL DIM. (mm - in)				
IP67 - STANAG 4280 (ed. 2) - DEF STAN 81-41 (lev. J)			L	W	D	Lid	Base	L	W	D
10826.B			1080	620	260	60	200	1178	725	287
			42.51	24.40	10.23	2.36	7.87	46.37	28.54	11.29



Padlockable points and heavy duty metal latches



# MULTI-WEAPONS



**MOD. 10840**

- Models **10840.B D1** and **10840.B D2** are set with internal pre-shaped foam bedding and metal lock bars for 6+6 weapons and 12+12 magazines.
- Model **10840.B D5** is set with a plastic molded rifle bedding and adjustable barrel rests, that allows for 6+6 guns of various lengths to be stored with mounted optics. Metal lock bars are padlock-able and completely removable. Magazines and accessories can be stored in the large Velcro-ed net pouch.

**All versions are able to accommodate most popular guns such as G36, MP5, M4, M16, AR 70/90.**

**CUSTOM WEAPONS RACKING SYSTEM AVAILABLE ON REQUEST**

## CONFIGURATIONS AVAILABLE COLORS: BLACK and MILITARY GREEN



pre-cubed foam 50/50 split lid and base

**Mod. 10840.B**



pre-cut foam for 6+6 rifles with humidity gauge 50/50 split lid and base

**Mod. 10840.B D1**



HUMIDITY GAUGE



pre-cut foam for 6+6 rifles without humidity gauge 50/50 split lid and base

**Mod. 10840.B D2**



adj barrel length for 6+6 rifles. 50/50 split lid and base

**Mod. 10840.B D5**



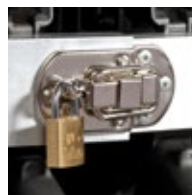
Automatic purge valve



Two men lift side handles



4 self-oiling free running wheels



Lockable metal bar to secure the guns. (on models 10840, BD1 & 10840.B D2)



The metal bar can be detached and securely hooked to the in-built padlockable point of the case (on model 10840.B D5)



Two adjustable barrel systems can be slid up and down independently to accommodate various barrel length. The large net pouch can secure magazines and accessories (on model 10840.B D5)

CODES AND COLORS		LID	INTERNAL CONFIGURATION	WEIGHT		VOLUME		BUOYANCY		TEMP. RATING	
BLACK	MIL. GREEN			Kg	Lbs	Lt	Gal	Kg	Lbs	°C	°F
10840.BE	10840.GE	DETACH.	EMPTY	22.80	50.26	260	68.68	120.6	265.87	min. -33 max +90	min. -27.4 max +194
10840.B	10840.G	DETACH.	PRE CUBED FOAM	28.40	62.61						
10840.B D1	10840.G D1	DETACH.	FOAM x 6+6 RIFLES + HUM. GAUGE	25.70	56.65						
10840.B D2	10840.G D2	DETACH.	FOAM x 6+6 RIFLES	25.70	56.65						
10840.B D5	10840.G D5	DETACH.	ADJ BARREL RESTS x 6+6 RIFLES	29.90	65.91						
CERTIFICATIONS				INTERNAL DIM. (mm - in)				EXTERNAL DIM. (mm - in)			
IP67 - STANAG 4280 (ed. 2) - DEF STAN 81-41 (lev. J)				L	W	D	Lid	Base	L	W	D
10840.B - 10840.G				1080	620	400	200	200	1178	718	427
				42.51	24.40	15.74	7.87	7.87	46.37	28.26	16.81

NSN available for most models on demand





# PISTOL CASES



## MOD. 2712

IDEAL TO STORE UP TO 2 PISTOLS WITH MAGAZINES AND ACCESSORIES

- Lid can be set to slide-off
- Counterbalance supports



Pressure release valve



Padlockable points

### << Mod. 2712.BCV

Case equipped with convoluted foam in both the bottom and the lid, and an additional middle double-sided convoluted foam separator.

## INTERNAL CONFIGURATIONS



pre-cubed foam



convoluted foam

## AVAILABLE COLORS



BLACK

MIL. GREEN

ORANGE

CODES AND COLORS			INTERNAL CONFIGURATION	WEIGHT		VOLUME		BUOYANCY (max)		TEMP. RATING	
BLACK	MIL. GREEN	ORANGE		Kg	Lbs	Lt	Gal	Kg	Lbs	°C	°F
2712.BE	2712.GE	2712.OE	EMPTY	1.62	3.57	6.6	1.58	4.2	9.25	min. -33 max +90	min. -27.4 max +194
2712.B	2712.G	2712.O	W/PRE CUBED FOAM	1.83	4.03						
2712.BCV	2712.GCV	2712.OCV	W/CONVOLUTED FOAM	1.50	3.30						
CERTIFICATIONS				INTERNAL DIM. (mm - in)				EXTERNAL DIM. (mm - in)			
IP67 STANAG 4280 (ed. 2) DEF STAN 81-41 (lev. J)				L	W	D	Lid	Base	L	W	D
				276	200	120	35	85	305	270	144
				10.86	7.87	4.72	1.37	3.34	12.00	10.62	5.66



# PISTOL CASES

## MOD. 3005

IDEAL TO STORE 1 PISTOL WITH MAGAZINES AND ACCESSORIES

- Stainless steel padlockable points
- Can be stored in vertical position
- Recessable handle

<< **Mod. 3005.BCV**  
Case equipped with convoluted foam in both the bottom and the lid.



Optional shoulder kit can be mounted (Art. SHOULDERKIT.U)



Stainless steel reinforced padlockable points



Can be stored in vertical position



Recessable handle keeps the case in flat horizontal position



Pressure release valve

## Mod. 3005.DGB >>

Protects the pistol in the padded velcroed pouch, stores 5 magazines and a cleaning rod in the elasticated loops.



Up to 5 magazines

## INTERNAL CONFIGURATIONS



pre-cubed foam



convoluted foam



padded pistol bag



Pistol bag Art. GBAG 30 (included)

## AVAILABLE COLORS



BLACK MIL. GREEN SAND ORANGE

CODES AND COLORS				INTERNAL CONFIGURATION	WEIGHT		VOLUME		BUOYANCY (max)		TEMP. RATING	
BLACK	MIL. GREEN	SAND	ORANGE		Kg	Lbs	Lt	Gal	Kg	Lbs	°C	°F
3005.BE	3005.GE	3005.DE	3005.OE	EMPTY	1.10	2.42						
3005.B	3005.G	3005.D	3005.O	W/PRE CUBED FOAM	1.20	2.64	4	1.05	2.10	4.62	min. -33 max +90	min. -27.4 max +194
3005.BCV	3005.GCV	3005.DCV	3005.OCV	W/CONVOLUTED FOAM	1.00	2.20						
3005.BGB	3005.GGB	3005.DGB	3005.OGB	W/PISTOL BAG	1.40	3.08						
CERTIFICATIONS					INTERNAL DIM. (mm - in)					EXTERNAL DIM. (mm - in)		
IP67 STANAG 4280 (ed. 2) DEF STAN 81-41 (lev. J)					L	W	D	Lid	Base	L	W	D
					300	210	58	20	38	326	269	75
					11.81	8.26	2.28	0.78	1.49	12.83	10.59	2.95

NSN available for most models on demand





## Pistol & Gun WATERPROOF CASES

# SOLUTIONS



### Mod. 4209.BGB >>

IDEAL TO STORE UP TO 2 PISTOLS WITH MAGAZINES AND ACCESSORIES

Protects the pistols in the padded velcroed pouch, stores 5 magazines and a cleaning rod in the elasticated loops.



### MOD. 4209

- Rubber grip handle
- Stainless steel padlockable points
- Optional shoulder strap available

Internal securing straps for magazines.

Up to 5 magazines.



Optional shoulder kit can be mounted (Art. SHOULDERKIT.U)



Automatic purge valve



Pull release latches and stainless steel padlockable points

## INTERNAL CONFIGURATIONS



pre-cubed foam

convoluted foam

padded pistol bag



Pistol bag Art. GBAG 42 (included)

## AVAILABLE COLORS



BLACK MIL. GREEN ORANGE SAND

CODES AND COLORS				INTERNAL CONFIGURATION	WEIGHT		VOLUME		BUOYANCY (max)		TEMP. RATING	
BLACK	MIL. GREEN	SAND	ORANGE		Kg	Lbs	Lt	Gal	Kg	Lbs	°C	°F
4209.BE	4209.GE	4209.DE	4209.OE	EMPTY	2	4.85	12	3.17	6,8	14.99	min. -33 max +90	min. -27.4 max +194
4209.B	4209.G	4209.D	4209.O	W/PRE CUBED FOAM	2.4	5.29						
4209.BCV	4209.GCV	4209.DCV	4209.OCV	W/CONVOLUTED	2.4	5.29						
4209.BGB	4209.GGB	4209.DGB	4209.OGB	W/PISTOL BAG	2.57	5.66						
CERTIFICATIONS					INTERNAL DIM. (mm - in)				EXTERNAL DIM. (mm - in)			
IP67 STANAG 4280 (ed. 2) DEF STAN 81-41 (lev. J)					L	W	D	Lid	Base	L	W	D
					420	300	95	35	60	457	367	118
					16.53	11.81	3.74	1.37	2.36	17.99	14.44	4.64



# PISTOL CASES



## MOD. 4419

**IDEAL TO STORE UP TO 6 PISTOLS AND 12 MAGAZINES**

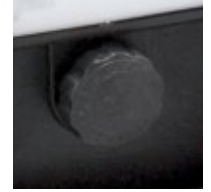
- Stainless steel reinforced padlockable points
- Soft grip rubber handle
- Optional shoulder kit can be mounted (Art. SHOULDERKIT.U)
- Lid can be set to slide-off



Optional shoulder kit can be mounted (Art. SHOULDERKIT.U)



Stainless steel reinforced padlockable points



Pressure release valve



Self-oiling free running wheels



## MOD. 5221

**IDEAL TO STORE UP TO 6 PISTOLS AND 12 MAGAZINES**

- Soft grip rubber handle and telescopic handle
- New pull release latch grants additional safety
- Self-oiling free running wheels
- Lid can be set to slide-off



Optional shipping label holder (Art. KIN.1224)



Pull release latches and stainless steel padlockable points



Automatic purge valve

## AVAILABLE COLOR



BLACK



BLACK

CODES AND COLORS		INTERNAL CONFIGURATION	WEIGHT		VOLUME		BUOYANCY (max)		TEMP. RATING	
BLACK			Kg	Lbs	Lt	Gal	Kg	Lbs	°C	°F
4419.B.6P		FOAM x 6 PISTOLS + 12 MAG.	4.35	9.59	29.20	7.66	19.7	43.43	min. -33	min. -27.4
5221.B.6P		FOAM x 6 PISTOLS + 12 MAG.	4.40	9.70	30.30	8.00	20.0	44.09	max +90	max +194
CERTIFICATIONS			INTERNAL DIM. (mm - in)				EXTERNAL DIM. (mm - in)			
IP67 - STANAG 4280 (ed. 2) - DEF STAN 81-41 (lev. J)			L	W	D	Lid	Base	L	W	D
4419.B.6P			445	345	190	47	143	474	415	214
			17.51	13.58	7.48	1.85	5.62	18.66	16.33	8.42
5221.B.6P			520	285	205	55	150	550	350	225
			20.47	11.22	8.07	2.16	5.90	21.65	13.77	8.85

OTHER MULTI PISTOL CASES SOLUTIONS AVAILABLE

NSN available for most models on demand





## Pistol & Gun WATERPROOF CASES

# SOLUTIONS



Stainless steel reinforced padlockable points



Self-oiling free running wheels

### MOD. 5823

**IDEAL TO STORE UP TO 12 PISTOLS AND 24 MAGAZINES**

- Side handles and soft grip rubber handle
- Stainless steel reinforced padlockable points
- Wheels and telescopic handle

Pressure release valve on both 5823 and 7630 mod.



Self-oiling free running wheels



Stainless steel reinforced padlockable points

### MOD. 7630

**IDEAL TO STORE UP TO 24 PISTOLS AND 48 MAGAZINES**

- Side handles and large front handle
- Wheels and retractable handle
- Stainless steel reinforced padlockable points

### AVAILABLE COLOR



BLACK



BLACK

CODES AND COLORS		INTERNAL CONFIGURATION	WEIGHT		VOLUME		BUOYANCY (max)		TEMP. RATING	
BLACK			Kg	Lbs	Lt	Gal	Kg	Lbs	°C	°F
5823.B.12P		FOAM x 12 PISTOLS + 24 MAG.	9.80	21.60	56.1	14.79	36.7	80.90	min. -33	min. -27.4
7630.B.24P		FOAM x 24 PISTOLS + 48 MAG.	15.00	33.06	113.1	29.85	81.80	180.33	max +90	max +194
CERTIFICATIONS			INTERNAL DIM. (mm - in)				EXTERNAL DIM. (mm - in)			
IP67 - STANAG 4280 (ed. 2) - DEF STAN 81-41 (lev. J)			L	W	D	Lid	Base	L	W	D
5823.B.12P			580	440	220	60	160	670	510	262
			22.83	17.32	8.66	2.36	6.29	26.37	20.07	10.31
7630.B.24P			765	485	305	60	245	860	560	355
			30.11	19.09	12.00	2.36	9.64	33.85	22.04	13.97

OTHER MULTI PISTOL CASES SOLUTIONS AVAILABLE



# TACTICAL GUN BAGS

## GUN BAGS

Heavy duty padded gunbags designed in different sizes to suit most different models of guns and accessories, for a safe protection and transportation.



ADJUSTABLE  
INTERNAL  
STRAPS TO  
SECURE RIFLE  
POSITION

HEAVY DUTY  
PADDED FABRIC

DURABLE  
ZIPPERS WITH  
NYLON PULLS

NEOPRENE HOOK  
& LOOP SIDE  
FLAPS

EXTERNAL PADDED ZIPPED  
POUCHES FOR MAGAZINES  
AND/OR ACCESSORIES



Art. BACKPACK KIT (optional)  
ALL GUNBAGS ARE FITTABLE  
WITH A PRACTICAL SHOULDER  
STRAP FOR BACKPACK USE.



**GBAG 30**  
Fits case 3005  
Ext. Dim. 300x210x40 mm.  
11 13/16 x 8 1/4 x 1 9/16 in



**GBAG 42**  
Fits case 4209  
Ext. Dim. 410x300x95 mm.  
16 1/8 x 11 13/16 x 3 3/4 in



**GBAG 44**  
Fits case 4412  
Ext. Dim. 445x345x90 mm.  
17 1/2 x 13 9/16 x 3 9/16 in



**GBAG 58**  
Fits case 5833  
Ext. Dim. 580x330x135 mm.  
22 13/16 x 13 x 5 5/16 in



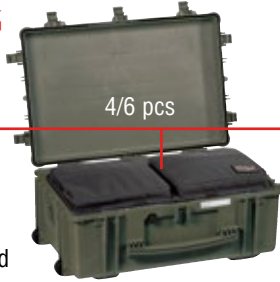


# Pistol & Gun WATERPROOF CASES



**GBAG 76**

Shoulder strap included



4/6 pcs



6/8 pcs



1 pc

**GBAG 76**

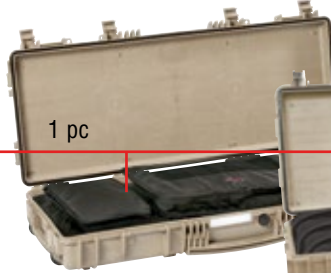
Fits cases 7630, 7641 and 7814

Ext. Dim. 765x352x135 mm.  
30 1/8 x 13 7/8 x 5 5/16 in

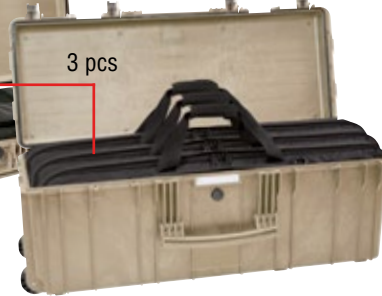


**GBAG 94**

Shoulder strap included



1 pc



3 pcs

**GBAG 94**

Fits cases 9413 and 9433

Ext. Dim. 939x352x135 mm.  
36 15/16 x 13 7/8 x 5 5/16 in



**GBAG 114**

Shoulder strap included



1 pc

**GBAG 114**

Fits case 11413

Ext. Dim. 1136x350x135 mm.  
44 3/4 x 13 3/4 x 5 5/16 in



**GBAG 135**

Shoulder strap included



1 pc



2 pcs

**GBAG 135**

Fits cases 13513 and 13527

Ext. Dim. 1350x350x135 mm.  
53 1/8 x 13 3/4 x 5 5/16 in



**GBAG 108**

Shoulder strap included



2/4 pcs



4/6 pcs

**GBAG 108**

Fits cases 10826 and 10840

Ext. Dim. 1080x400x135 mm.  
42 1/2 x 15 3/4 x 5 5/16 in



# PADDED GUN BAGS

Tactical heavy duty padded fabric gunbag suitable for long gun or sniper rifles, magazines and accessories. The best weapon protection.

Fits case mod. 15416.  
Ext. Dim. 1540x365x70/160 mm.  
60 5/8 x 14 13/16 x 2 3/4 - 6 5/16 in.  
Weight 3 Kg. - 6.6 lbs.



Shoulder strap included

## GBAG 154

External padded zipped pouches for magazines and accessories



Full-opening zipper for shooting mat configuration

Fits case mod. 15416

Internal weapon securing straps

Neoprene Hook&Loop flaps



Fittable with the optional backpack system in the rear (Art. BACKPACK KIT - see page 16)

## GUN SLEEVES

Designed to protect your rifle and accessories, these new well-padded budget gun bags are lightweight and durable, provided with inner straps to keep your firearm properly secured.



**GSLEEVE 78** (fits case 7814)  
Ext. Dim. 780x340x80 mm.  
30 11/16 x 13 3/8 x 3 1/8 in.



**GSLEEVE 94** (fits case 9413)  
Ext. Dim. 935x340x70 mm.  
36 13/16 x 13 3/8 x 2 3/4 in.



**GSLEEVE 114** (fits case 11413)  
Ext. Dim. 1135x340x70 mm.  
44 11/16 x 13 3/8 x 2 3/4 in.



**GSLEEVE 135** (fits case 13513)  
Ext. Dim. 1345x340x70 mm.  
52 15/16 x 13 3/8 x 2 3/4 in.



# MULTI-UTILITY BOX



- Moulded High Impact Polypropylene
- Moulded integral lifting points on both ends
- Full length steel hinge pin to lid
- Positive grab over latching catches
- Use in high/low temp environments
- Slide out clear ID Nameplate holder
- Large fold flat carry handle
- Padlocking provision and stacking location points



WATER RESISTANT



## MUB78

- Empty
- Trolley case integral wheels and hinge out pull handle

Art. KIT TRAY MUB - Optional Tray with removable divider for tools, instruments or spare parts. MUB78 can fit up to two trays. Elasticated bands for the tray also available (art. KIT03).



## MUB65

- Empty

## AVAILABLE COLORS



BLACK

MIL. GREEN

SAND

CODES AND COLORS			INTERNAL CONFIGURATION	WEIGHT		VOLUME		BUOYANCY (max)			
BLACK	MIL. GREEN	SAND		Kg	Lbs	Lt	Gal	Kg	Lbs		
MUB 65	MUB 65.GE	MUB 65.DE	EMPTY	4.40	9.70	61.5	16.24	42.7	94.13		
MUB 78	MUB 78.GE	MUB 78.DE	EMPTY	6.30	13.88	89	23.51	80.5	177.47		
				INTERNAL DIM. (mm - in)				EXTERNAL DIM. (mm - in)			
				L	W	D	Lid	Base	L	W	D
MUB 65 >>				653	340	312	65	247	678	404	331
				25.70	13.38	12.28	2.55	9.72	26.69	15.90	13.03
MUB 78 >>				780	410	330	50	280	807	470	345
				30.70	16.14	12.99	1.96	11.02	31.77	18.50	13.58

## OPTIONAL ACCESSORIES



PATENTED HEAVY DUTY BRASS PADLOCK  
(Art. EXPL PADLOCK)



PATENTED COMBINATION PADLOCK  
(Art. EXPL COMBILOCK)



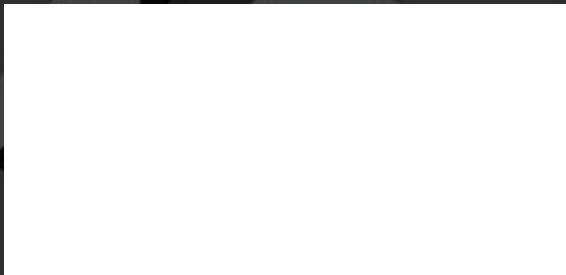
TSA LOCK™ COMBI PADLOCK  
(Art. EXPL TSA.DIGILOCK)



3-digits locks - on demand  
(case code + DL)

For mod.:  
9413  
9433  
11413  
13513  
13527  
15416  
10826  
10840





**EXPLORER**  
CASES

[www.explorercases.com](http://www.explorercases.com)



REG. N. 1594-A  
UNI EN ISO 9001:2015

CAT. PISTOL & GUN WATERPROOF CASES - EN  
MP.0457 - 10/21 - 2.000  
EXPLORER CASES is a registered brand of GT LINE srl (Italy). Content is not included. The information contained in this catalogue are indicative only. GT Line reserves the right at all times to incorporate modifications in the models described, in accordance with technical or commercial requirements. All product names, logos and brands are property of their respective owners.