

LALS

2022 WORKBOOK





LALO produces and sells technologically advanced footwear designed and developed in conjunction with US Special Forces Operators, Tactical Athletes and First Responders. Relying on years of formal testing and evaluation with Elite Special Forces Units, LALO specifically produces best-in-class tactical and athletic footwear lines that are disruptive in their unique features. LALO exists to elevate the standard against which all other tactical and athletic brands are measured - in product design, content, authenticity, customer service and social stewardship.

We use top tier materials to create some of the best and hardest working tactical boots and athletic footwear for those that rise to the toughest occasions. We honor those who choose a path of purpose, a path of hard work, grit and determination. Every piece of gear we create is for the end user who refuses to settle for the status quo.

Whether your path leads you to a career in the military, competing in an adventure race, cross training, tackling an urban athletic workout, or running a 5K, we invite you to experience LALO.

ECTV

SHADOW AMPHIBIAN



Black Ops
1ML001 BKO



Coyote
1ML001 COY



8" Black Ops
1ML041 BKO

The Ultimate Special Forces Tactical Boot. The Shadow Amphibian is made in conjunction with the Navy SEALs and for military operatives to use while in the air, on land and while swimming. The passive drainage system is not designed to keep the water out, but to let it flow in and out of the boot as needed.

Used for amphibious operations, where the user is working in or around water, or exiting a wet environment on to land, the Amphibian is a go to boot for those who require quick dry components, drainage, comfort and innovative technology all built into one. The LALO Shadow Amphibian is for those who work hard in silence and let success make the noise.

FEATURES

- 01 HIDDEN LACE POCKET
- 02 TREK DRY™ BAMBOO MOISTURE-WICKING, H2O SHEDDING ANTIMICROBIAL LINER
- 03 CARBONIZED RUBBER TOE CAP AND HEEL COUNTER DESIGNED TO RESIST ABRASION AND PROTECT THE FOOT
- 04 DUAL DIRECTION DRAINAGE PORTS
- 05 MULTI-DENSITY EVA DESIGNED TO CUSHION AT FOOT-STRIKE AND PROPEL DURING TOE-OFF
- 06 FIN CLIP
- 07 KPU GRILL DESIGNED TO KEEP OUT DEBRIS WHILE ALLOWING FOR BREATHABILITY
- 08 PUNCTURE-RESISTANT COMPOSITE PLATE WITH ROTATION FOR PROTECTION AND FATIGUE REDUCTION

WEIGHT: 1lb 3.6oz (5" cuff)

ACTIVE DROP: 8mm



SHADOW INTRUDER



Coyote
1ML007 COY



Black Ops
1ML007 BKO



8" Black Ops
1ML047 BKO

The Shadow Intruder is made for and in conjunction with First Responders and Military Special Forces. It is used widely by the military, police officers, firemen and women, first responders, SWAT teams and others who spend long hours on duty, most of that time on their feet. It is designed to provide support, comfort and traction in high-stress situations, including hiking, hunting, rucking and more.

The go-to boot for law enforcement, firefighters, military, first responder operations, hiking, hunting, and rucking. The Intruder is carefully crafted for those who dare to do more.

FEATURES

- 01 HIDDEN LACE POCKET
- 02 TREK DRY™ BAMBOO MOISTURE-WICKING, H2O SHEDDING ANTIMICROBIAL LINER
- 03 CARBONIZED RUBBER TOE CAP AND HEEL COUNTER DESIGNED TO RESIST ABRASION AND PROTECT THE FOOT
- 04 SLIP-RESISTANT INJECTION MOLDED RUBBER
- 05 MULTI-DENSITY EVA DESIGNED TO CUSHION AT FOOT-STRIKE AND PROPEL DURING TOE-OFF
- 06 ARTICULATING HEEL AND OUTSOLE SHAPE FOR A QUIET STEALTH APPROACH
- 07 KPU GRILL DESIGNED TO KEEP OUT DEBRIS WHILE ALLOWING FOR BREATHABILITY
- 08 PUNCTURE-RESISTANT COMPOSITE PLATE WITH ROTATION FOR PROTECTION AND FATIGUE REDUCTION

WEIGHT: 11lb 4.8oz (5" cuff men's size 9.5) |

ACTIVE DROP: 8mm



SHADOW JUNGLE COMBAT



Jungle
1ML063 JNG



Black Ops
1ML063 BKO

A new take on an old classic, the LALO Shadow Jungle Combat Boot is made for use in land-based operations and wet environments. It features a passive drainage system, which is not designed to keep the water out, but to let it flow in and out of the boot as needed. This boot features a 9" cuff.

FEATURES

- 01 HIDDEN LACE POCKET
- 02 TREK DRY™ BAMBOO MOISTURE-WICKING, H2O SHEDDING ANTIMICROBIAL LINER
- 03 1000D CORDURA™ NYLON UPPER
- 04 SLIP-RESISTANT INJECTION MOLDED RUBBER
- 05 MULTI-DENSITY EVA DESIGNED TO CUSHION AT FOOT-STRIKE AND PROPEL DURING TOE-OFF
- 06 FULL GRAIN LEATHER
- 07 TWO WAY PASSIVE DRAINAGE SYSTEM
- 08 PUNCTURE-RESISTANT COMPOSITE PLATE WITH ROTATION FOR PROTECTION AND FATIGUE REDUCTION

WEIGHT: 11lb 8oz (men's size 9.5)

ACTIVE DROP: 8mm



SHADOW UCB AR670-1



Coyote
1ML072 COY



Woodland
1ML072 WOD



The LALO Shadow UCB (uniform compliant) combat boot was designed to meet regulation uniform requirements, but more importantly, all day comfort. The Shadow UCB is a durable, lightweight boot purposely made for warm weather environments. It features our signature drainage system to help with as much air circulation as possible to keep your feet as comfortable as they can be. This boot features a 9" cuff.

FEATURES

- 01 HIDDEN LACE POCKET
- 02 TREK DRY™ BAMBOO MOISTURE-WICKING, H2O SHEDDING ANTIMICROBIAL LINER
- 03 1000D CORDURA™ NYLON UPPER
- 04 SLIP-RESISTANT INJECTION MOLDED RUBBER
- 05 MULTI-DENSITY EVA DESIGNED TO CUSHION AT FOOT-STRIKE AND PROPEL DURING TOE-OFF
- 06 COYOTE FLESH OUT COWHIDE FULL GRAIN LEATHER
- 07 TWO WAY PASSIVE DRAINAGE SYSTEM
- 08 PUNCTURE-RESISTANT COMPOSITE PLATE WITH ROTATION FOR PROTECTION AND FATIGUE REDUCTION

WEIGHT: 1lb 7.6oz (men's size 9.5)

ACTIVE DROP: 8mm



OPERATOR



Black Ops
1ML008 BKO



8" Black Ops
1ML043 BKO



The LALO Shadow Operator is geared toward first responders, police, SWAT, EMT and firefighters. It is a durable tactical boot with all the technology the Intruder and Amphibian offer but with a uniform compliant upper and a polishable toe. Dual zone EVA foam in the midsole makes for comfort when standing and propulsion when moving. Available in both 5" and 8" cuff heights.

FEATURES

- 01 HIDDEN LACE POCKET
- 02 TREK DRY™ BAMBOO MOISTURE-WICKING, H2O SHEDDING ANTIMICROBIAL LINER
- 03 LIGHTWEIGHT BREATHABLE CORDURA™ UPPER FOR SECOND SKIN-LIKE FIT
- 04 SLIP-RESISTANT INJECTION MOLDED RUBBER
- 05 MULTI-DENSITY EVA DESIGNED TO CUSHION AT FOOT-STRIKE AND PROPEL DURING TOE-OFF
- 06 ARTICULATING HEEL AND OUTSOLE SHAPE FOR A QUIET STEALTH APPROACH
- 07 POLISHABLE FULL GRAIN LEATHER
- 08 PUNCTURE-RESISTANT COMPOSITE PLATE WITH ROTATION FOR PROTECTION AND FATIGUE REDUCTION

WEIGHT: 11lb 7.2oz (men's size 11)

ACTIVE DROP: 8mm



RAPID ASSAULT 6"



Coyote
1ML087 COY



Black Ops
1ML087 BKO



Multicam
1ML087 MUC

The LALO Rapid Assault boot is designed for quick entry and exit when time is critical. It is a comfortable, lightweight, all-purpose duty boot for all-day wear. The dual-density EVA in the midsole provides cushion while standing and propulsion when it's "go" time. It features a two-way passive drainage system designed to move moisture away from the foot, a carbonized bamboo antimicrobial lining, ample toe box space, slip-resistant outsole traction pods, and much more.

The Rapid Assault is the ultimate high-speed low drag hybrid for when there's no time for fear or thought, just action - the one thing that separates the quick from the dead. The LALO Rapid Assault - Find your rush.

FEATURES

- 01 HIDDEN LACE POCKET
- 02 TREK DRY™ BAMBOO MOISTURE-WICKING, H2O SHEDDING ANTIMICROBIAL LINER
- 03 LIGHTWEIGHT BREATHABLE CORDURA™ UPPER FOR SECOND SKIN-LIKE FIT
- 04 EVA HEEL COUNTER FOR MAXIMUM STABILITY AND A SECURE FIT
- 05 DRAINAGE PORTS FOR A TWO-WAY PASSIVE DRAINAGE SYSTEM
- 06 LALO OFF ROAD TRACTION PODS (ORTP)
- 07 MULTI-DENSITY EVA CONSTRUCTION DESIGNED TO CUSHION AT FOOT-STRIKE AND PROPEL DURING TOE-OFF
- 08 CARBONIZED RUBBER TOE CAP AND HEEL COUNTER DESIGNED TO RESIST ABRASION AND PROTECT THE FOOT

WEIGHT: 1lb 1oz (men's size 10)

ACTIVE DROP: 5mm



RAPID ASSAULT 9"



Coyote
1ML088 COY



Black Ops
1ML088 BKO



Multicam
1ML088 MUC

The LALO Rapid Assault boot is designed for quick entry and exit when time is critical. It is a comfortable, lightweight, all-purpose duty boot for all-day wear. The dual-density EVA in the midsole provides cushion while standing and propulsion when it's "go" time. It features a two-way passive drainage system designed to move moisture away from the foot, a carbonized bamboo antimicrobial lining, ample toe box space, slip-resistant outsole traction pods, and much more.

The Rapid Assault is the ultimate high-speed low drag hybrid for when there's no time for fear or thought, just action - the one thing that separates the quick from the dead. The LALO Rapid Assault - Find your rush.

FEATURES

- 01 HIDDEN LACE POCKET
- 02 TREK DRY™ BAMBOO MOISTURE-WICKING, H2O SHEDDING ANTIMICROBIAL LINER
- 03 LIGHTWEIGHT BREATHABLE CORDURA™ UPPER FOR SECOND SKIN-LIKE FIT
- 04 EVA HEEL COUNTER FOR MAXIMUM STABILITY AND A SECURE FIT
- 05 DRAINAGE PORTS FOR A TWO-WAY PASSIVE DRAINAGE SYSTEM
- 06 LALO OFF ROAD TRACTION PODS (ORTP)
- 07 MULTI-DENSITY EVA CONSTRUCTION DESIGNED TO CUSHION AT FOOT-STRIKE AND PROPEL DURING TOE-OFF
- 08 CARBONIZED RUBBER TOE CAP AND HEEL COUNTER DESIGNED TO RESIST ABRASION AND PROTECT THE FOOT

WEIGHT: 11lb 3oz (men's size 10)

ACTIVE DROP: 5mm



PHANTOM GOLD WEATHER



Phantom
1ML083 PGY



Black Ops
1ML083 BKO



The LALO Phantom Cold Weather Boot provides the ultimate traction and warmth to help withstand the elements. Features a specially designed non-slip outsole to help maintain stability in deep snow and on slick winter surfaces. The Phantom's AeroGel™ insulated liner keeps the foot warm, while remaining breathable and comfortable. This boot can handle any winter environment thrown its way.

FEATURES

- 01 HIDDEN LACE POCKET
- 02 INSULATED AEROGEL HYDROPHOBIC ANTIMICROBIAL LINER
- 03 INTERNAL WATERPROOF MEMBRANE
- 04 SLIP-RESISTANT INJECTION MOLDED RUBBER
- 05 SEAMLESS, LIGHTWEIGHT QUARTER PANEL PROTECTION CONSTRUCTION
- 06 ARTICULATING HEEL AND OUTSOLE SHAPE FOR A QUIET STEALTH APPROACH
- 07 MULTI-DENSITY EVA DESIGNED TO CUSHION AT FOOT-STRIKE AND PROPEL DURING TOE-OFF
- 08 PUNCTURE-RESISTANT COMPOSITE PLATE WITH ROTATION FOR PROTECTION AND FATIGUE REDUCTION

WEIGHT: 1lb 8.9oz (men's size 11)

ACTIVE DROP: 8mm



BUD/S BLOODBIRD X



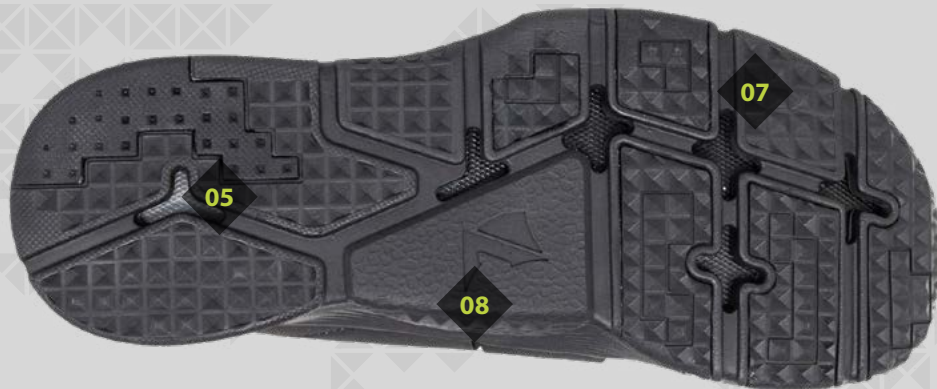
Black Ops

M 1BU204 BKO
W 2BU204 BKO



Jungle

1BU204 JNG
2BU204 JNG



The Bloodbird X offers superior stability through the mid-foot and shines in workouts with less dynamic movements such as weight training, where the focus is on grounding and stability. This lightweight knit upper fits like a charm. With a dual zone EVA (50 rearfoot 55 forefoot) shore EVA foam in the midsole, the Bloodbird X is a solid choice for movements requiring attention to balance such as squats, deadlifts, push press, cleans and jerks. We believe that tough situations build strong people which is precisely why we built the Bloodbird X.

FEATURES

- 01 ADAPTIVELY ENGINEERED, LIGHTWEIGHT, BREATHABLE KNIT UPPER FOR SECOND SKIN-LIKE FIT
- 02 TREK DRY™ BAMBOO MOISTURE-WICKING, H2O SHEDDING ANTIMICROBIAL LINER
- 03 CARBONIZED HEAT TRANSFER TOECAP DESIGNED TO RESIST ABRASION AND PROTECT THE FOOT
- 04 EVA HEEL COUNTER FOR MAXIMUM STABILITY AND A SECURE FIT
- 05 MULTI-DENSITY EVA CONSTRUCTION DESIGNED TO CUSHION AT FOOT-STRIKE AND PROPEL DURING TOE-OFF
- 06 STABILITY WRAP ENVELOPES MID-FOOT FOR EXTRA SUPPORT
- 07 UNIQUE CLEAVER PATTERN RUBBER OUTSOLE PODS FOR INCREASED TRACTION
- 08 STABILITY ARCH

WEIGHT: 8.2oz (men's size 9)

ACTIVE DROP: 5mm



BUD/S GRINDER X



Black Ops

M 1BU202 BKO
W 2BU202 BKO



Jungle

M 1BU202 JNG
W 2BU202 JNG



This breathable cross-trainer is as light as a feather and looks as sharp on the street as it does in the gym. The Grinder X is a mid-foot mobility shoe that shines in a variety of cross-training activities. This lightweight knit upper fits like a charm. The Grinder X features a dual zone EVA (50 rearfoot 55 forefoot) foam midsole and was engineered for dynamic, bodyweight-based agility drills and movements.

It features a softer, grippier, feel for multi-directional movements such as jump rope, burpees, box jumps, jumping lunges, and more. It is a practical shoe for rowing, short distance runs and sprints. In life, there are grinders and non-grinders. We'll let you decide who we made this shoe for.

FEATURES

- 01 ADAPTIVELY ENGINEERED, LIGHTWEIGHT, BREATHABLE KNIT UPPER FOR SECOND SKIN-LIKE FIT
- 02 TREK DRY™ BAMBOO MOISTURE-WICKING, H2O SHEDDING ANTIMICROBIAL LINER
- 03 CARBONIZED HEAT TRANSFER TOECAP DESIGNED TO RESIST ABRASION AND PROTECT THE FOOT
- 04 EVA HEEL COUNTER FOR MAXIMUM STABILITY AND A SECURE FIT
- 05 MULTI-DENSITY EVA CONSTRUCTION DESIGNED TO CUSHION AT FOOT-STRIKE AND PROPEL DURING TOE-OFF
- 06 STABILITY WRAP ENVELOPES MID-FOOT FOR EXTRA SUPPORT
- 07 UNIQUE CLEAVER PATTERN RUBBER OUTSOLE PODS FOR INCREASED TRACTION
- 08 STABILITY ARCH

WEIGHT: 7.5oz (men's size 9)

ACTIVE DROP: 5mm



BUD/S ZODIAC RECON AT



Black Ops

M 1BU105 BKO
W 2BU105 BKO



Jungle

M 1BU105 JNG
W 2BU105 JNG



The LALO Zodiac Recon All Terrain (AT) is an over-sized, rugged running shoe with lightweight component construction and responsive geometry. It provides a quick and responsive ride for off road terrain. The Zodiac Recon AT is suitable for both long and short distance runs, but excels on trails, mixed substrates and road. Due to the construction of the outsole, this is not a shoe for the treadmill.

FEATURES

- 01 LIGHTWEIGHT, BREATHABLE UPPER FOR A SECOND SKIN-LIKE FIT AND FEEL
- 02 TREK DRY™ BAMBOO MOISTURE-WICKING, H2O SHEDDING ANTIMICROBIAL LINER
- 03 CARBONIZED HEAT TRANSFER TOECAP DESIGNED TO RESIST ABRASION AND PROTECT THE FOOT
- 04 EVA HEEL COUNTER FOR MAXIMUM STABILITY AND A SECURE FIT
- 05 DRAINAGE PORTS FOR A TWO WAY PASSIVE DRAINAGE SYSTEM
- 06 ROCKER-SHAPED SOLE TO PROMOTE FORWARD MOMENTUM AND GOOD FORM RUNNING/WALKING
- 07 MULTI-DENSITY EVA CONSTRUCTION DESIGNED TO PROPEL DURING TOE-OFF
- 08 LALO OFF ROAD TRACTION PODS (ORTP)

WEIGHT: 10.7oz (men's size 9.5)

ACTIVE DROP: 5mm



STRAND



Black Ops
1BU084 BLW



The LALO Strand features all the performance components of the Zodiac Recon ATX but with an Airprene upper for a breathable, relaxed fit. If you're a person who likes to slip on and off their shoes without tying them, the easy entry and exit of the LALO Strand is a no brainer. This shoe is as optimal for triathletes as it is for after-action lounging and recovery.

FEATURES

- 01 DRAINAGE PORTS FOR A TWO-WAY PASSIVE DRAINAGE SYSTEM
- 02 EVA HEEL COUNTER FOR MAXIMUM STABILITY AND A SECURE FIT
- 03 LIGHTWEIGHT, BREATHABLE AIRPRENE UPPER FOR SECOND SKIN-LIKE FIT
- 04 MULTI-DENSITY EVA CONSTRUCTION DESIGNED TO CUSHION AT FOOT-STRIKE AND PROPEL DURING TOE-OFF
- 05 BREATHABLE FABRIC MESH MATERIAL AND LIGHTWEIGHT NEOPRENE WITH NON-WICKING PROPERTIES
- 06 ROCKER-SHAPED SOLE TO PROMOTE FORWARD MOMENTUM AND GOOD FORM RUNNING/WALKING
- 07 SIGNATURE LALO OFF ROAD TRACTION PODS (ORTP)
- 08 LALO OCF - OPERATOR COMPONENT FIT SYSTEM

WEIGHT: 9.3oz (men's size 5.5)

ACTIVE DROP: 5mm



BUD/S ZODIAC RECON ATX



Black Ops

M 1BU106 BKO
W 2BU106 BKO



Battleship

M 1BU106 BAT
W 2BU106 BAT



The LALO Zodiac Recon All Terrain X (ATX) is an over-sized, rugged running shoe with lightweight component construction, responsive geometry and an adaptively engineered knit upper - the more you wear it, the more it forms to the shape of your foot. This shoe provides a quick and responsive ride for both on and offroad terrain. Due to the construction of the outsole, this is not a shoe for the treadmill.

FEATURES

- 01 LIGHTWEIGHT, ADAPTIVELY ENGINEERED KNIT UPPER FOR A SECOND SKIN LIKE FIT AND FEEL
- 02 TREK DRY™ BAMBOO MOISTURE-WICKING, H2O SHEDDING ANTIMICROBIAL LINER
- 03 CARBONIZED HEAT TRANSFER TOECAP DESIGNED TO RESIST ABRASION AND PROTECT THE FOOT
- 04 EVA HEEL COUNTER FOR MAXIMUM STABILITY AND A SECURE FIT
- 05 DRAINAGE PORTS FOR A TWO WAY PASSIVE DRAINAGE SYSTEM
- 06 ROCKER-SHAPED SOLE TO PROMOTE FORWARD MOMENTUM AND GOOD FORM RUNNING/WALKING
- 07 MULTI-DENSITY EVA CONSTRUCTION DESIGNED TO PROPEL DURING TOE-OFF
- 08 LALO OFF ROAD TRACTION PODS (ORTP)

WEIGHT: 13.1oz (men's size 11)

ACTIVE DROP: 5mm



BUD/S ZODIAC RECON ATX 5"



Black Ops
M 1BU107 BKO
W 2BU107 BKO



Coyote
M 1BU107 COY
W 2BU107 COY



Jungle
M 1BU107 JNG
W 1BU107 JNG

The Zodiac Recon ATX 5" is an over-sized, rugged running shoe with lightweight component construction, responsive geometry and an adaptively engineered knit upper - the more you wear it, the more it forms to the shape of your foot. It features a built-in sock liner for jumpability and to keep out debris while providing a quick, responsive ride for both on and offroad terrain. Due to the construction of the outsole, this is not a shoe for the treadmill.

FEATURES

- 01 LIGHTWEIGHT, ADAPTIVELY ENGINEERED KNIT UPPER FOR A SECOND SKIN LIKE FIT AND FEEL
- 02 TREK DRY™ BAMBOO MOISTURE-WICKING, H2O SHEDDING ANTIMICROBIAL LINER
- 03 CARBONIZED HEAT TRANSFER TOECAP DESIGNED TO RESIST ABRASION AND PROTECT THE FOOT
- 04 EVA HEEL COUNTER FOR MAXIMUM STABILITY AND A SECURE FIT
- 05 DRAINAGE PORTS FOR A TWO WAY PASSIVE DRAINAGE SYSTEM
- 06 ROCKER-SHAPED SOLE TO PROMOTE FORWARD MOMENTUM AND GOOD FORM RUNNING/WALKING
- 07 MULTI-DENSITY EVA CONSTRUCTION DESIGNED TO PROPEL DURING TOE-OFF
- 08 LALO OFF ROAD TRACTION PODS (ORTP)

WEIGHT: 13.1oz (men's size 11)

ACTIVE DROP: 5mm



BUD/S HYDRO RECON



Black Ops

M 1BU006 BKO
W 2BU006 BKO



Jungle

M 1BU006 JNG
W 2BU006 JNG



The Hydro Recon is a rapid response waterborne shoe inspired by the SOF Operators need to move with efficiency in and out of the water and over varied terrain. The Hydro Recon is a sound choice for BUD/s Training, swimming, beach, slick rocks, river terrain, reef, paddle and surfboard decks, outdoor adventure races, OTB ops and more. Tested, tried and true in a variety of terrain, the Hydro Recon is for those who only look backwards to see how far they have come.

FEATURES

- 01 MEDIAL SIDE ZIPPER
- 02 LIGHTWEIGHT INSULATED 1.0 MM NEOPRENE UPPER
- 03 STABILITY WRAP ENVELOPES MID-FOOT FOR EXTRA SUPPORT
- 04 EVA HEEL COUNTER FOR MAXIMUM STABILITY AND A SECURE FIT
- 05 CARBONIZED RUBBER TOE CAP AND HEEL COUNTER DESIGNED TO RESIST ABRASION AND PROTECT THE FOOT
- 06 PERFORATED MIDSOLE FOR DRAINAGE
- 07 CUSHIONED EVA OUTSOLE
- 08 UNIQUE CLEAVER PATTERN RUBBER OUTSOLE PODS FOR INCREASED TRACTION

WEIGHT: 8.9oz (men's size 9.5)

ACTIVE DROP: 5mm



SIZE CHART

US MEN'S	US WOMEN'S	UK	EU	CM
3.5	5	3	35	22
4	5.5	3.5	36	22.5
4.5	6	4	37	23
5	6.5	4.5	37.5	23.5
5.5	7	5	38	24
6	7.5	5.5	39	24.5
6.5	8	6	39.5	25
7	8.5	6.5	40	25.5
7.5	9	7	41	26
8	9.5	7.5	41.5	26.5
8.5	10	8	42	27
9		8.5	42.5	27.5
9.5		9	43	28
10		9.5	44	28.5
10.5		10	44.5	29
11		10.5	45	29.5
11.5		11	45.5	30
12		11.5	46	30.5
12.5		12	46.5	31
13		12.5	47	31.5
13.5		13	47.5	32
14		13.5	48	32.5
15		14.5	50	33.5
16		15.5	52	34.5

LALOG



📞 619.876.5256

📍 1676 Main St. San Diego, CA

✉️ office@lalotactical.com

📷 [LALOtactical](https://www.instagram.com/LALOtactical)